



Berlin, 31. März 2015

Wir freuen uns über die hochwertigen Einreichungen, die uns aus über 20 Ländern erreichten!

Die Auswahl von zukunftsweisenden, nachhaltigen Produkten reicht vom Design-Studenten bis zum industriellen Markenartikler.

Die Beiträge zeichnen sich durch glaubwürdige Konzepte, Kreativität und Mut zu neuen Wegen aus.

Aus den Projekten der Green Selection werden die Award-Gewinner der jeweiligen Kategorien bestimmt, die am 8.6. in Zusammenarbeit mit der IHK Berlin im Ludwig Erhard Haus offiziell bekanntgegeben werden.

Many submissions of high quality from over 20 countries reached us in order to take part at the Green Product Award!

The selection of pioneering sustainable products range from the design student to industrial home appliances manufacturer.

The contributions are characterized by authenticity, creativity and a mould-breaking innovations.

The selected projects are also automatically nominated for the Green Product Award in the corresponding categories. The official award ceremony for the award winners will be held on June 8 in collaboration with the Berlin Chamber of Commerce in the Ludwig Erhard Haus.

Contact:

presse@gp-award.com

Nils Bader, Tel.: Tel: +49 30 25742881

Please send us a copy to be retained on file in the event of publication.

H.O.M.E.
living modern life

flair

interzum
www.interzum.de

i infurma
International Furniture & Lighting magazine

DMY

InteriorPark.

avocadoStore
eco fashion & lifestyle



8pandas Series1

8pandas c/o brand.partner GmbH, Germany



Die ECO Design Produkte von 8pandas legen Wert auf Nachhaltigkeit - Design - Funktionalität. Die Produkte sind 100% natürlich und biologisch abbaubar. So bestehen die Serie1 und Serie2 aus verschiedenen formschönen Geschirrtteilen, wie Tellern, Tassen, Schüsseln und Besteck die dem Anspruch der Nachhaltigkeit, Ästhetik und Funktionalität folgen. Die Geschirrsereien sind sowohl für den Alltagsgebrauch in der Familie, für In- und Outdoor sowie in der Gastronomie, im Büro und Corporate Segment vielseitig geeignet.



Acoustic Greenwall 2.0

Akustik Fabrik, Netherlands



At the moment the market of acoustics is filled with non-sense, polluting materials and cold technical solutions. Products with a good acoustic performance aren't sustainable nor esthetically and vice versa. The Akustik Fabrik believes in a world of endless creativity and with no distinction between man and nature. With this in mind we designed the Greenwall 2.0, the next level in the field of acoustics. The sustainable wall is a modular, but limitless wall system which gives everyone the creative freedom to transform their own space into a natural environment. Our whispering wall delivers as it combines real nature with an outstanding acoustic performance. Last but not least is the wall maintenance free, easy to install and produced with respect for man and environment. The true innovation lies in the combination of all the factors mentioned above. The Greenwall 2.0 is definitive proof that sustainability, interior architecture and real acoustics can go hand in hand.



afilii - design fit for kids

afilii, Germany



afilii's goal is to promote inspirational, creative and sustainable products that satisfy childrens' unique needs: playobjects and childrens' furniture. afilii offers values and orientation while transparently informing about every product: which materials were used under which circumstances, are there certifications or even awards? We at afilii aspire to introduce an international audience of interior designer, reseller, journalists and parents to design fit for kids.



Alma

Muotoilutoimisto Ehee, Finland

Alma is a multifunctional wooden lamp. The shape of the lamp leads to versatile use. Alma fits smoothly in private homes but also in public interiors: It is usable one at a time but also in a group of many lamps. Alma lamps can be hung with variable positions (the position of the lamp depends how the cord of the lamp is set), which leads to an impressive and variable lighting variations even in the larger places. This versatility, environmentally friendly light source and wooden material prolong the lifespan of the lamp.



Antidotes . Upcycling plastic

Quimera, Spain

A widespread use of plastic as a tailor made modern clay fulfills our daily needs. It is a strong, low-cost, durable and lightweight material that has quickly become disposable. Easy to transform and upcycled, it can be turned from a global problem into a benefit. Almost a kilo per person of disposable plastic containers leave our doorway every week, giving rise to several million tons of plastic residue that not only damage our marine populations but end up back to our dining tables in the form of micro particles. Plastic pollution is a global issue that affects everyone, with this material accumulating in all of our oceans for more than 50 years. This issue isn't going away anytime soon.



AQR

*Kai Chun Cheng - Chung Yuan Christian University
(Department of Interior Design), Taiwan*

AQR enables us to extract water from the air. It is reusable and sustainable without polluting the environment. This device is light, easy to transport and operate, and requires no electricity. The device could improve the problem of water scarcity and enhance drinking water quality.



Art of Sustainability

Totems Communication & Architecture GmbH, Germany

Art of Sustainability is a business-to-consumer exhibition and focuses on sustainable lifestyle and innovation. The exhibition anticipates on a shift in human consciousness with regard to global sustainability and the related challenges ahead. During a 3.5-day event this physical platform enables information exchange between carefully selected companies (exhibitors), consumers (visitors), artists, designers and various interest groups. The 1st edition takes place in Q2/Q3 2016 in Shanghai, China. Consumption is a perfect entry-point for teaching about sustainable development, because the potential to stimulate change lies in the hands of conscious individuals and in the choices they make in everyday life. Therefore consumer education is a practical and important tool – it touches the daily lives of people. The aim of the exhibition is to inspire visitors with breakthrough innovations about the importance but also the beauty of sustainability – in an inspiring and enjoyable way. Please read the PDF-presentation for all project details: <http://goo.gl/zN7dKD>



Artichair

KIZIS STUDIO, UK

The cardoon, also called the artichoke thistle, is a thistle-like plant native to the western and central Mediterranean region, where it was domesticated in ancient times. This project has involved the development of a new, 100% biodegradable eco-material, and explored possible applications for it within product design. A lounge and a dining chair are designed to demonstrate the potential of the material for use within the furniture industry. Since the material biodegrades upon disposal, and seeds of the cardoon are included in the making process, it is feasible that a new cardoon plant will one day grow wherever the products are buried at the end of their useful life.



AVOCADO GARDEN

Avocado Garden, Lithuania

For us avocado taste and texture associates with pure, neutral and eco life. So we decided to grow avocado garden, because we want to spread good practices and ideas which are sustainable but still modern, contemporary, stylish. Avocado garden is a mindset, so everyone can have it, outside your house or inside your head. All you need is seed (good will), water (care) and the sun (love).



AZ desk

Guillaume Bouvet, France

AZ desk is a modular desk and blackboard which grows with kids (from A to Z). The vertical blackboard with a magnetic surface can be converted into an ergonomic work surface and be adapted to the user's size from young children to adults. The desk is made using birchwood ply panels from sustainably managed forest (FSC) providing a good stability and a solid aspect to the unit; its texture, grain and natural colour stimulate the development of the child's senses. The sustainability of this product is linked to its capacity to adapt. No obsolescence, blackboard becomes small size desk for 6/8 years old children then becomes medium size desk for 8/12 years old children and finally becomes high size desk for children over 12 years old and adults. Because of this accompanying, children create an emotional bond with desk. A desk designed with the life cycle of the user in mind that can travel with the child into his/her future endeavours.



BLOCK HOUSES

Holzhausen, Germany

It's the compact design which makes the block houses of HOLZHAUSEN so special. Thanks to clear lines and exact proportions combined with wood as an authentic and sustainable material the block houses appeal to all senses and act as a great toy for children and adults of all ages. No matter if you want to touch, play, build, design, experiment or combine – each house is an individual building stone of your fantasy. Together they create a world filled with a wide variety of different shapes and structures and offer an almost unlimited playground for curious children who have fun discovering new things. Made of regional lumber from sustainable forestry each house is a unique, one of a kind toy. Simple is beautiful, simply beautiful. The set includes 24 block houses and one red house. The block houses are made of untreated wood, the red house is varnished with ecological varnish for toys. The set is complete with a match sack made of unbleached cotton. For children of all ages.
www.holz-hausen.de



Baumbook

Baumbook, Germany



Today, numerous kindergartens and schools craft collection boxes in the context of nature excursions out of cardboard. With enthusiasm they decorate and fill the boxes with their collection of this nature trips. However, the cardboard boxes pass out of mind with time and with them also the memories of the wonderful and emotional excursions into nature. As parents we became aware of the importance of the boxes very fast and wanted to create something modern and valuable.



Marc O'Polo Flagshipstore Berlin

dan pearlman Markenarchitektur GmbH, Germany



In Form einer modernen Altbauwohnung präsentiert sich seit dem 27. Juni 2013 der Marc O'Polo Flagshipstore mit dem von dan pearlman konzipierten Retail-Konzept, gemäß dem Motto „Nordic Lifestyle“. Neben den deutschlandweit 84 Marc O'Polo Stores, stellt der Flagshipstore am Berliner Ku'damm, von der Deutschen Gesellschaft für Nachhaltiges Bauen e.V. (DGNB e.V.) mit Gold zertifiziert, einen besonderen Meilenstein dar. Hier zeigt sich eine Altbauwohnung im nordischen Design, die nicht nur Einkaufserlebnis ist, sondern auch soziale und ökologische Nachhaltigkeit abbildet. Für die gelungene Übersetzung der Charakteristika des Gesamtkonzepts in ein nachhaltiges Store-Konzept galt es, den vielfältigen Kriterien der DGNB e.V. gerecht zu werden. Das DGNB e.V. Projekt ist zudem ein Pilot-Projekt im Bereich Retail.



Bed Luke

ekomia GmbH, Germany



Ein ökologisches Design-Bett zu einem erschwinglichen Preis. Das Design des Bett Luke ist minimalistisch gehalten, mit klaren Linien und Verzicht auf modische Elemente. Das Bett ist multifunktional verwendbar mit einem Regal und variabler Ablage. Unter dem Bett gibt es zusätzlich Stauraum. Durch die abgeschrägten Füße macht es den Eindruck, als würde es schweben. Wir haben versucht den gesamten Produktlebenszyklus des Bettes möglichst nachhaltig zu gestalten: FSC-zertifiziertes Holz, lösemittelfreie Biofarben, kurze Transportwege für Rohstoffe und Produkte, flache Verpackungen für effizienten Versand, CO₂-Kompensation der LKW-Fahrten, Plastikfreie Verpackung und zu guter Letzt eine sehr stabile Massivholz-Konstruktion, die viele Jahre halten und leicht repariert werden kann.



bioblo - The biological building block made from 100% renewable resources

bioblo Spielwaren GmbH, Austria

Who says building blocks have to look boring? Exactly. Bioblos are a new form of construction bricks that are ideal for playing, building and creative designing. They spark the imagination of both the young and the old. In contrast to traditional wooden blocks, Bioblos are made from a special organic compound (60% wood, 40% bioplastics) that allows for a much more flexible shape forming. The result is a block with a unique honeycomb design, fascinating feel and a great advantage over plastic: Bioblos are made from 100 % renewable resources!



Biorestaurant Werratal im Biohotel Werratal

Biohotel Werratal GmbH, Germany

Das Biohotel Werratal, unsere Vision – unser Sinn Es hat sich in der Region zu dem modernen, grünen Leuchtturm in der Hotellandschaft entwickelt. Wir gelten als vorbildliches und wegweisendes Familienhotel mit Bio-Garantie. Als „stolzes Schiff“ der Nachhaltigkeit und des guten Geschmacks begeistern wir Gäste und Mitarbeiter/innen gleichermaßen. Unser Hotel spiegelt durch sein äußeres Erscheinungsbild den nachhaltigen und umweltfreundlichen Gedanken wieder. Diese Freiheit ermöglicht uns, einen wertvollen und lebenswerten Mikrokosmos zu gestalten, der in die Welt hinaus wirkt. Wir ziehen Menschen an, die sich für Nachhaltigkeit interessieren und unsere Werte schätzen. Es sind offene Menschen, die wissen, was sie wollen und die unsere Liebe für gesundes und genussvolles Essen und Trinken teilen. Sie erkennen den Wert unseres Tuns und Seins und spüren im Gegenzug, dass wir sie als Menschen mit Wünschen und Bedürfnissen sehen. Das neue Biorestaurant wird zu Ihrem Treffpunkt.



PURE PLANET organic fabric softener

Planet Pure Produktions und Handels GmbH, Germany

As Silvio Perpmer has founded Planet Pure in 1999, he wanted to create a corporate culture that serves the good of the human and the environment. After 1.Bio - certified Laundry Detergent Planet Pure brought the first organic fabric softeners on the market that has been certified after the strict guidelines Austria Bio Guarantee. Made from pure vegetable raw materials without solvent, chemical surfactants or palm oils makes this laundry-elixir for pleasant soft and fresh laundry, which is also smooth and easier to iron after drying. The waste from the production is then processed further into biogas. In addition, Pure Planet has chosen a package of BRASKEM'S GREEN PE FKUR -a Bioplastic.



CAN be beautiful

Juan GALAN, Switzerland

CAN be beautiful is inspired by environmental problems, especially the contamination found in the streets and the lack of waste sorting. I decided to collect cans, which devoid of their content and their graphic design become a common object that everyone knows, uses and throws. With a total transformation of the can I propose a unisex jewelry collection, that have a mysterious visual content related with the transformation of the object. Each piece is made from a can hammered and forged. Finally plated or colored with an oxidation process to protect the surface.



Caravan Crib Raw

Kalon Studios, Germany

Inspired by the storybook circus wagon, the Caravan Crib plays with classic form and contemporary, ultra-bold colors. Thoughtfully considered, the Caravan Crib meets modern parent's needs: Safety (solid construction, stationary sides, conforms to the highest safety standards and 100% visibility of your child from all sides), Green (fully sustainable and made from the highest quality, sustainably harvested, solid European Maple and with 100% non-toxic and/or food safe materials + finishes), Practical (adjustable mattress height and toddler bed conversion), Great Design (modern form, contemporary palate, lots of options) and Domestically Made in the E.U.



Carbon6 Water Glasses

Kiersten Muenchinger - University of Oregon, USA

Carbon6 Water Glasses help families consider the interplay of materials, product function, and environmental sustainability with each sip of water, milk and tea. The set of six includes one each in aluminum, ceramic, polypropylene, polyethylene, primary glass and recycled glass. Each drinking vessel is designed to have exactly – and provocatively – the same environmental impact as its mates. Carbon6 Water Glasses open information to people about the features and failures of materials in an environmental context, through simple daily use.



CITRUS Concept, Serves „Room-To-Room“ Mobility

Peter Opsvik AS, Norway



CITRUS is a three-wheel foldable kick-scooter that can accompany the user throughout the day, alternating being a scooter or cart. The product can easily be brought onto busses and trains, into shops or workplaces. It may also be fitted with a small motor. Challenged by the problems of urban transport, designer Peter Opsvik has developed a smart intermodal transport concept. The vehicle CITRUS offers its user independency in city traffic as a tri-scooter or transforms into a compact trolley case via a one-grip movement. The idea behind the vehicle CITRUS is a close interaction with public transportation. An electric drive works in combination with kick scooter functionality offering its user a handy means of transportation that can be used by anyone, anywhere. Being accepted in indoor environments as a trolley case, CITRUS serves “Room-To-Room” mobility as it can be brought into the office, restaurants, trains etc. where the user does not have to worry about parking and theft.



Color Flip-Flops

Kao Chen-Yuan - National Cheng Kung University, Taiwan

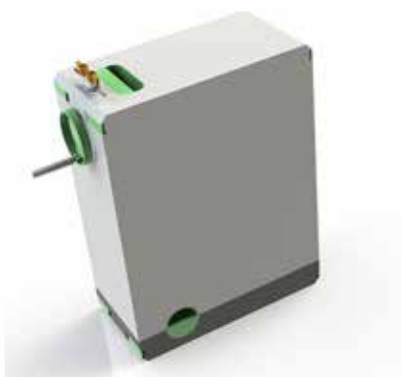


The recreational shoes with changeable surface both has two basic functions: practicability and Esthetic Approach. Practicability is the hypothesis of the changeable surface design. Esthetic approach and changeability functions are important extended function to changeable shoes surface design. The surface and base of the shoes could be disassembled. The design of inosulation shoes is one set of shoes base with several changeable different surfaces. Different surfaces could be applied individually to random outfits.



Compact Biogas Plant

Gavin Redman Creations, Southafrica



The Compact Biogas Plant, is a compact and efficient household organic waste digester. It produces biogas, mainly methane (CH₄) and carbon dioxide (CO₂), from the anaerobic digestion (organic decomposition without oxygen) of organic waste by micro-organisms. It's form and function is based loosely on that of the human digestive system.



Coral Lightshade

David Trubridge Ltd., New Zealand



CORAL is a kitset lightshade that captures all the joy of nature, such as evening light flickering through spring tree leaves. The strongest impact is its shadow effect on nearby walls or ceiling. It uses minimum material for maximum effect, and is shipped in small neatly packed boxes to reduce freight impact. The thin flexible ply pieces create a remarkably rigid skin when assembled with easy push-in clips that require no tools. After the user has had the fun of assembling it they will love it more and keep it longer. It is made from sustainable bamboo plywood which comes painted in a select range of colours on one side. Its size range is enormous from 40 cm right up to 1.6m diameter, so it is equally suitable for intimate rooms and vast commercial spaces.



Cortex (latin: bark of a tree)

LeuchtNatur GmbH, Germany



LeuchtNatur is a German producer of high-quality designer and luxury lighting. The focus when developing every new product is on sustainability, ensuring the creation of extremely robust and energy-efficient lights. We bring contemporary design coupled with natural materials to your living space and conjure up a pleasant and cosy atmosphere with our special wood coverings.

When we established the company LeuchtNatur, we wanted to counteract the modern sterile trend by combining modern design and high-tech technology with the soothing aura of natural materials and warm light. We intended to transform cold living spaces into cosy homes.



Cradle Rocker

iD Architektur iD Studio, Germany



Eine Wiege wird häufig mit großer Vorfreude und höchsten Ansprüchen ausgesucht. Sie ist ein Möbel, welches oftmals zum Familienerbstück wird – umso besser, wenn sie dann noch multifunktional ist. Die Wiege „Cradle-Rocker“ wird mit wenigen Handgriffen zu zwei Schaukelstühlen umfunktioniert und kann so nach der Wiegenfunktion ein Leben lang genutzt werden. Die Schaukelstühle sind sowohl Kinder als auch Erwachsenen tauglich. Die Sitzhöhe ist an Kinderstühle angepasst; die Sitzfläche hingegen ist passend für einen Erwachsenen, so dass die „Rocker“ als Lounge-Sessel genutzt werden können.



Dr. Reckhaus Fliegenscheibe (fly trap)

Reckhaus GmbH & Co. KG, Germany

Dr. Reckhaus products stand for biocides with the highest ecological standards: Avoidance, reduction and compensation of insect repellents. The offset works through the creation of ecological compensating areas for insects even prior to the products being sold. In cooperation with biologists, the company developed a scientific model that measures the environmental impact of biocides and that describes how green corridors compensate for the damage.

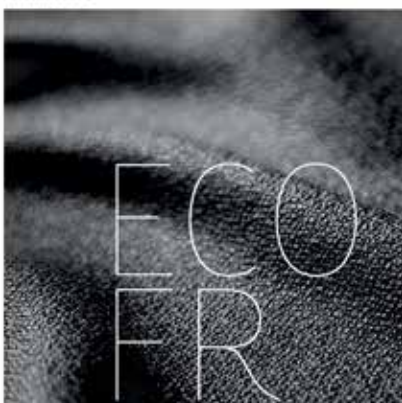
Thus, the label "Insect Respect" was created. It offers a solution to compensate for the negative impacts of biocide-products. This worldwide unique method is covered by an international patent. The Dr. Reckhaus Fliegenscheibe (fly trap) will be introduced onto the market by 2016. It will then be the first product certified with this quality label thus compensating for the loss of insects well in advance. The special design of the product will sensitize the consumer's awareness for the value of insects.



DTSE9 G2

EMAMI DESIGN, Germany

The USB-Stick can easily be connected to objects (like a key ring) through a single large eyelet. The shape is reduced to its functionality and handling. The geometry of the connector adapts to the whole case to overcome the visual separation between case and plug connection. The sticks innovation is its ergonomic form. It adapts the form of a thumb and allows intuitive handling through the clear assignment of the top and bottom side, so the user will instantly plug in the USB-stick correctly.



ECO FR

Christian Fischbacher Co. AG, Switzerland

Christian Fischbacher adds a revolutionary textile innovation to its collection: ECO FR is the first fabric made of 100% linen and viscose that is both flame retardant and biodegradable. Innovative, patented technology is used to create a natural flame retardant yarn, without the use of any chemical additives. ECO FR protects naturally against fire. ECO FR is the result of three years of research. The idea was to create a biodegradable, environment-friendly flame-retardant fabric with no chemical additives used in its production. ECO FR fulfils all the relevant international requirements for flame retardancy while providing the comfort and softness of a natural fabric. The fibre also lives up to various internationally recognised ecological standards.



ECO AIR BUBBLE

Moujiti (Beijing) Media Technology Co. Ltd, China

Beijing has suffered tremendously from bad air pollution. It's society crisis, it's every citizen's crisis, instead of flee the city or simply cover oneself up, Interactive Beijing decided to do something about it. So we launched "Our air" program. Eco Air Bubble is „Our A!r“ pilot project's concept prototype. This pilot project consists of three systems: human powered air purification system, green plants air refreshing system and air quality monitoring and data visualisation system. In this installation we modify and upgrade public community gym machines, use human powered air purification mechanism, combine with fresh air generating green plants, plus digital display shows real time in-door and out-door air quality and PM2.5 differences, three parts together creates an eco fresh air zone. This pilot is made to demonstrate the possibility of bottom up change of our air quality with help of public participation.



Ecohive

Veronica Carli, Germany

EcoHive was born in order to create awareness. Its aim is to promote the values of ecological packaging, the benefits and advantages it can produce. Ethic values: Respect of the environment, being part of an aware and sustainable innovation, think about the future. Functional values: Creating an archive / database with useful and easily accessible information that will contribute in changing in a concrete way the people's attitude regarding to the environment and his safeguard . A website will be the meeting point for companies and citizens. It'll allow to exchange opinions, ideas thoughts and projects.



EINSHOCHZWEI

Sascha Kleczka, Germany

Einshochzwei are shelves that are flexed from 1 m² large and 1.5mm thick prefabricated steel plates. Their size exactly corresponds to the dimensions of the Euro-pallet (1200x800mm). An area of one cubic meter (m³) is sufficient for the storage and cost-efficient delivery of 660 shelves. The customer purchases the shelves directly from the pallet and assembles them in no time. Incorrect assembling is not possible due to the simple form. The shelves are reduced to their linear design, carry handles, minimalistic bending edges and direct edge contours. The project focuses on the optimization of the production and transportation cycle, the reduction of material costs and the avoidance of waste from packaging and transportation.



Emili Window

Chun-Ming Yeh - Chung Yuan Christian University, Taiwan



The Emili window automatically controls the luminous flux entering a room based on changes in the surrounding environment. As the temperature increased, the transmittance decreased. This blocked external heat sources and the sun's infrared light, thereby achieving the desired effect of cooling the inside of the buildings and meeting the objective of reduced air-conditioning power consumption. As the temperature decreased, the transmittance increased. This allowed sunlight to penetrate into the building, thus increasing the room temperature and reducing heater power consumption.



Changemaker

Changemaker AG, Switzerland



Changemaker - The shop for stylish and useful objects for everyday life, living and wellbeing.

Every product has its own story. At Changemaker, you can be sure it's a good one. It starts with designers who have a passion for the meaningful. It tells you about workers with fair wages and small manufacturers who feel responsible for the preservation of our environment and nature. And it ends with people like you, who care about fairness and their green conscience when they go shopping.



Farrah Floyd

Farrah Floyd, Germany



Farrah Floyd is a fashion brand. Twice a year, we put out a new collection offering approx. 20 pieces of different products of women clothing, such as tops, skirts, dresses, jackets and accessories. We work with different sustainable design strategies, using only certified fabrics, and producing in Germany. Beside unique design, our main focus is zero-waste pattern making technique, developed by Farrah Floyd's owner and designer Bojana Draca. With this technique that breaks all the traditional ideas of pattern making, we make sure to have no left over of fabrics after the production. Every pattern piece is a rectangle, and curves are created only after when the construction reaches 3D form and fits to the body.



Flaska – Ihre persönliche Wasserquelle

Flaska d.d., Slovenia



Your portable water spring. Flaska is a reusable glass water bottle. The glass is programmed using the TPS procedure and restructures the water in the bottle. Flaska is available in two sizes (0.5l & 0.75l). It is made from robust glass, which is highly resistant to drops. Additionally it is protected by sleeves made from neoprene, silicone, cork or cotton, so you can use Flaska on the go. A large variety of models and designs guarantees that everyone will be able to find a perfect Flaska. www.flaska.de



form.bar - Inspired by Nature, Designed by You

Okinlab GmbH, Germany



Form.bar ist eine innovative 3D-Webanwendung, die auf neusten Erkenntnisse aus Architektur, Bionik und Informatik basiert und es Menschen erstmalig ermöglicht, ihre Möbel selbst nach Maß zu entwerfen und an die individuelle Ergonomie anzupassen. Die Berücksichtigung der Fertigungsspezifikationen schon während des Designs und eine mathematische Optimierung ermöglichen die automatisierte Herstellung mittels CNC-Fräsen aus Holzwerkstoffplatten. Individualisierte Möbel sparen nicht nur immer knapper werdenden Wohnraum und stellen jedem Menschen mehr Lebensqualität zur Verfügung, sie sparen auch einen Großteil des bei der konventionellen Produktion verwendeten Materials ein, indem Material nur dort eingesetzt wird, wo es gebraucht wird. Der Aufbau der Möbelteile erfolgt über einfache Holzsteckverbindungen, weshalb auf energieintensive Stahlteile, wie Schrauben, verzichtet wird. Form.bar-Möbel sind daher nicht nur funktional und ästhetisch, sondern insbesondere auch nachhaltig.



Green Product Award Selection 2015



G313

Giroflex GmbH, Germany

Giroflex 313 (g313) is the first fully fledged office chair that adjusts itself completely automatically to the weight of its respective users. This chair sets standards for the new working environments. The For workplaces shared by several people this is a noticeable gain in comfort and efficiency. The giroflex 313 is available as a swivel chair or as a conference chair. Its high degree of sustainability is confirmed by the Cradle to Cradle certificate. The latest innovation from Stoll Giroflex is in a class of its own: in the new flexible working environments in which chairs are shared, people rely on the giroflex 313. This revolutionary chair adapts itself to the body characteristics of the individual. It is enough to just sit down and the giroflex 313 does the rest. This is possible thanks to the world first of the specially developed and patented Giroflex Balance Move system. This system maximizes the interaction of seat, backrest and body weight, thus allowing perfect ergonomic sitting. The design of the giroflex 313 bears the signature of Swiss industrial designer Paolo Fancelli. The g313 also represents the Giroflex culture of sitting: it features lightness, ergonomics, quality, design, functionality, wellbeing and innovation. Initial enthusiastic reactions suggest the giroflex 313 will convince many prospective users and turn them into fans. Giroflex quality can be relied on too: Giroflex provides a 5-year warranty on construction, mechanism and workmanship. The maximally reduced concept of the giroflex 313 consists of just four components. All necessary functions are integrated in these. At the end of the product life cycle the high quality and mono-separated materials can be largely returned to their technical cycles without loss and are again available for use in premium products. The eco-efficiency achieved by Stoll Giroflex in this way is so far unique in the market.



Hempprotein Powder

Feinstoff Vertriebs GmbH, Austria

The healthy and sustainable protein alternative!

The rise in the worldwide population demands to rethink our daily food. Hempprotein powder offers a sustainable way of protein sustenance. It contains twice as much protein as beef and is very easy to digest. With all 23 amino acids included, it is the perfect protein for humans. Hemp is very resistant and doesn't need any pesticides to grow. Since hemp sprouts very fast and is able to absorb carbon dioxide, it has a positive effect on global warming. Hempprotein is the ecofriendly alternative to meat protein.



FARM ANIMALS

Holzhausen, Germany

Cat and cow, sheep and pig, rabbit and chicken, horse, lamb, goose and a goat—ten small farm animals are the perfect toys for children's play at home or for taking along for fantasy travel. And the farmer and his wife make sure that the flock stays together. In combination with the farmhouses of HOLZHAUSEN, the farm is perfectly complete. The wooden animals inspire with their simple shapes and geometric lines, leaving plenty of room for the imagination. The lucky green pig is a real eye-catcher and the animals stacked as „Bremen Town Musicians“ or „Animal Artists“ become almost objects of art themselves! The wooden animals are sustainably made from German beech wood in a workshop by people with disabilities. They come with their own small organic carry bag which will easily fit in any handbag. For children of all ages. Simple and simply beautiful. www.holz-hausen.de



JURA F9 - Fully automatic coffee machine

JURA Elektrogeräte Vertriebs-GmbH, Germany

The fully automatic coffee machine JURA F9 prepares 14 different specialities like espresso, latte macchiato or a fancy flat white at the push of a button and lets individual coffee dreams come true. The F9 convinces with extremely low power consumption and belongs to the category "better than energy efficiency class A" according to the Swiss FEA classification. The clean and timeless design of the automatic coffee machine embodies its sustainability not only technologically but also visually.



Holz-Kalk

darlielau studio, Hong Kong

Holz-Kalk is an innovative BBQ fuel box made of two materials. The main ingredients are 100% biodegradable charcoal and Calcium hydroxide, which can improve soil composition.



KELIPSE, connected electrical terminal for fairs

CUBE TECHNOLOGIES, France



The innovative mobile electricity distribution and energy-saving terminal for modular exhibition stands. KELIPSE unites breakthrough design, easy utilization, cost savings and high environmental performance to supply trade fair stands with electricity and Internet connexion.

- Attractive and compact design: it takes up only 25cm of floor space.
- It guarantees transparency, traceability and is 95 % recyclable
- It offers a monitoring tool to control the set-up of the terminals, to immediately answer customers' changing requirements and to have access to the connection data as well as all tracks recorded in real time throughout the event.



Kisten Trolley

everything's GmbH c/o Büro Haerberli, Switzerland



Wie geht Zack Zack im Gemüseverkauf? Kann man eine Strassenküche zusammenfalten? Wieviele Kisten braucht ein Mensch? Der Kisten-Trolley ist einfach praktisch und lässt sich viel-seitig einsetzen: Auf dem Gemüsemarkt, für Zubehör beim Sportunterricht, im Blumenladen, für das Gartenfest, etc. Dauerhaft und stabil konstruiert aus nachhaltigem Holz und Stahl, wiegt der Kisten-Trolley ca. 15 kg und lässt sich leicht öffnen und schliessen. Dank gleitgelagerten, vollgummibereiften Rädern rollt er leicht, auch in schwierigem Gelände.



les copains

Brühl & Sippold GmbH, Germany



The decorative les copains range of string furniture includes chairs with four different backrest types, bar stools, recliners, stools and also round and square tables for indoor and outdoor use. They combine an overall look that is customisable in many ways with an airy, graceful design language and a wide range of material, colour and feature options, thereby allowing particularly creative and individual living solutions. The materials used and the outstanding workmanship also ensure a long product life-span and exceptional comfort. The indoor versions can also be moved outside and used outdoors.

The string weaving is hand-crafted from durable hemp strings and can be renewed when necessary. It is produced using a particularly decorative knotting technique, which adds yet another element of individuality to the furniture's character. Design: Kati Meyer-Brühl



Lexus Reception Desk

TINMAN, Israel



The counter is made from LEXUS car parts. Doors and hood mounted on a course of laser-cut segments. The inspiration for this project came from the vehicles and Design Philosophy of LEXUS. The products we manufacture are all made from materials that are already resistant and recyclable which gives them a new life and of course the option to recycle them again and again to create different and unique products.



Licht Fraktal

Ricardo Rodriguez, Germany



Als Theaterplastiker habe ich immer wieder für Kulissenbau- und Großdekorationenfirmen gearbeitet, so habe ich mich mit der Holzbearbeitung auseinandergesetzt. Seit einiger Zeit arbeite ich auch in einem Bilderrahmen-Atelier. Da wird meistens nur Holz verwendet. Im Bearbeitungsprozess bleibt jede Menge Holzreste, die oft im Feuer landeten bis ich auf die Idee gekommen bin damit verschiedene Objekte herzustellen: Stühle, kleine Tische, Regale ect. und insbesondere Lampen. Heute bin ich nicht mehr der einzige im Atelier, der die Holzreste wiederverwendet: andere Kolleginnen sind meinem Beispiel gefolgt. Was ist für mich dabei so besonderes Lampen zu gestalten? Ich komme aus einem tropischen Land in dem es keinen Vierjahreszeiten-Wechsel gibt und die Lichtverhältnisse dementsprechend monochromatisch sind. Bei mir zu Hause gab es bloß Glühbirnen! Abends war das Licht entweder an oder aus – keine Licht-Variationen.



Licht, Luft und Leichtigkeit:

Die Giraffensavanne im Münchner Tierpark Hellabrunn

dan pearlman Erlebnisarchitektur GmbH, Germany



Perfekt in seine Umgebung eingepasst und dabei nicht nur transparent, offen und hell - so mutet das neue Giraffenhaus der Berliner Architekten von dan pearlman im Tierpark Hellabrunn an. Die großzügige, 10.000 Quadratmeter große Anlage besteht aus dem Schauhaus auf 770 Quadratmetern und einem weitläufigen Außengehege für die Tiere. Als oberstes Gestaltungsprinzip galt es, räumliche Grenzen zwischen Landschaft und Architektur sowie zwischen Besuchern und Tieren aufzuheben.



LJ series

De Vorm, Netherlands



The seat of the LJ series is made out of recycled PET bottles. The design of the seat brings back many traditional production steps to one smart 3D pressing technique. PET Felt is made of recycled bottles which are turned into a soft, though strong Felt material, which is long lasting and UV stabilized. PET Felt is both recycled as well as recyclable itself. It has a soft, natural touch and offers great sound dampening properties and comfort. Design: Laurens van Wieringen



Mapuguaquén - The Sound of the Earth"

Documentary Design GbR, Germany



Urbevölkerung aus dem Süden Chiles. Diese handgedrehten Lautsprecher aus schwarzer portugiesischer Erde verbinden uralte Töpfer-Tradition mit moderner wireless Audio-Technologie und werden so zur Schnittstelle von Gegenwart und Vergangenheit. Das Design der organisch geformten Klangkörper wird abgerundet durch weitere natürliche Materialien wie Olivenholz und Kork und eine Bemalung mit Eigenengobe (Terra Sigillata). Mapuguaquén gibt es in verschiedenen Ausführungen; aktiv oder passiv, stereo oder mono –aber immer nur in limitierten (nummerierten) Kleinserien. Einfach und kabellos zu bedienen von Smartphone, Tablet oder Computer, sprechen sie sowohl die akustische, visuelle und haptische Wahrnehmung an, und lassen uns nebenbei die Welt der Lautsprecher und die der Töpferei neu überdenken und aufwerten.



Massivholz-Modulküche „Culinara“

allnatura Vertriebs GmbH & Co. KG, Germany



Der Gedanke des Mitwachsens war bei der Kreation unserer Massivholz-Modulküche mit einer ökologisch hochwertigen Öl-Wachs-Kombination ausschlaggebend - heute schon an morgen denken! Somit musste eine Küche kreiert werden, die sich der individuellen Raum- und Lebenssituation anpasst. Das heißt, Sie begleitet Einen das Leben lang und selbstverständlich auch die Natur unterstützt. Mobil, flexibel und einfach edel sollte die neue Küchengeneration werden. Von der Studentenbude, dem Single-Haushalt bis zur Großfamilie ist sie individuell auf Ihr Leben anpassbar. Bei einem Umzug nehmen Sie Ihre „Culinara“ einfach mit. Darüber hinaus sind unsere Küchenmöbel garantiert schadstoffgeprüft. Sie ist somit eine echte Investition in ein komplett wohngesundes Umfeld in Verbindung mit einem einfachen Bestellprozess. Sozusagen eine nur bei allnatura exklusiv online bestellbare hochqualitative Modulküche aus Massivholz zu einem sehr guten Preis-Leistungsverhältnis.



Materialdatenbank zur datenbasierten Designberatung für nachhaltigere Entscheidungen im Produktdesign

BMW Group Designworks USA, Germany

Designworks hat mit Partnern ein Service Tool zur datenbasierten Designberatung- und Umsetzung entwickelt. Es ist einzigartig auf der Welt & basiert auf einer Datenbank mit der weltgrößten Konzentration von Materialwissen. Das smarte Consulting Tool bietet eine integrierte Antwort auf die derzeit größten Unternehmen Herausforderungen: Verbesserung der Produktqualität bei gleichzeitiger Kostensenkung unter Erhöhung der Effektivität. Es schließt eine eklatante Lücke im Bereich der integrierten Design- und Nachhaltigkeitsberatung. Mit dem neuen Tool wird Designworks die Prozessintelligenz im Designprozess steigern, in der Designberatung Intuition und Messbarkeit verbinden und der Designberatung eine neue Qualität geben. Das Tool ermöglicht es u.a., Designlösungen sehr früh im Prozess zu bewerten UND auch zu visualisieren. Dadurch fördert es die Sicherheit des Kunden, souveräne, verantwortungsbewusste und informierte Entscheidungen zur Entwicklung nachhaltiger Produkte zu treffen.



Maze Hairbrush

Scott Shim - The Ohio State University, USA



MAZE hairbrush is designed to conveniently remove trapped and tangled strands of hair, thus solving the fundamental maintenance problem of a hairbrush.



Meerestuch (Ocean Cloth)

Imke Woelk Studio, Germany

The „Meerestuch“ is a fabric that was manufactured out of fishing nets and ropes that have been washed ashore. It is designed as a home accessory and can be used as a wall picture or tapestry. Moreover, it serves as a communicator about the growing pollution of our oceans with plastic waste. Its is manufactured using the weaving technique - one of the oldest human crafting techniques. The used materials are nylon threads that change their appearance considerably by the impact of salt water and UV light. The product consists 100 % of a resource, that is already in the material cycle and that can be reprocessed without any additional energy or other resources. Despite their initial and inconspicuous identity, the fabric threads now appear precious and aesthetically appealing.

The hand-woven „Meerestuch“ stands against mechanical mass production and encourages the beholder to a more responsible use of resources.



Metro - Datum, Gangreserve

Berlinerblau GmbH, Germany

Metro, die preisgekrönte Handaufzugsuhr von NOMOS Glashütte, vereint höchste Präzision mit urbaner Eleganz. Das klare Blatt mit Datum, Gangreserveanzeige und feiner Minuterie erinnert an exakte Messgeräte. Bei aller Weltläufigkeit ist Metro jedoch durch und durch Glashütte: In ihr tickt etwa das NOMOS-Swing-System – jenes hauseigene Assortiment, mit dem die Manufaktur 2014 das Monopol der Schweizer Uhrenindustrie gebrochen hat. Das Assortiment, der Taktgeber eines jeden Kalibers, entscheidet wesentlich über Genauigkeit, Robustheit und Langlebigkeit – es selbst zu fertigen, galt in der Welt feiner Uhren bislang fast als Unmöglichkeit. Für NOMOS Glashütte war dies auch eine Unabhängigkeitserklärung: Die Manufaktur fertigt von Anker bis Zahnrad in Glashütte, mit einer Fertigungstiefe von bis zu 95 Prozent. Dabei wird auch auf Nachhaltigkeit großen Wert gelegt: Der ausgezeichnete „Ökoprofit-Betrieb“ garantiert beste Produktionsbedingungen, Materialien, Arbeitsplätze in der Region.



Take-a-ride card

Robin Weidner - The University of Design Schwäbisch Gmünd, Germany



Why does nearly every car have only one or two passengers?

With the take-a-ride card a car driver can show to others, that he is up for taking someone with him. The product communicates while the car is parking and driving. Take-a-ride furniture and signs next to traffic roads are supposed to show people who are looking for a ride, that they have the possibility to look for it there.

The „M“ stands for „Mitfahrtscheibe“, this means take-a-ride card.

<https://vimeo.com/106639154>



Mobile Solar Container

Mobile Solarkraftwerke Afrika GmbH & Co. KG, Germany



Green Energy for Africa! Our product will provide clean energy & transfer know-how, i.e. provide a sustainable and ecological framework for the reduction of poverty in Africa. The innovative product „Mobile Solar Container“ brings clean electricity to rural areas, where only very few people have electricity at all. Green energy (solar & wind) combined with mobility, are an unique approach to solve problems in Africa. This service with a fair pricing that also respects the needs of the people does not exist in Africa so far. Product movie: <https://www.youtube.com/watch?v=RgJIGI368jI>



moneytubes - the little black one, all you need at night

moneytubes, Germany



Ein Schwerpunkt des Labels moneytubes liegt auf der nachhaltigen Verwendung von Ressourcen. Wir arbeiten bereits bestehende Materialien wie Fahrradreifen oder -schläuche ihren Eigenschaften entsprechend aufwendungsarm um und verhelfen ihnen so zu neuem oder weiterem Gebrauch. So belassen wir den Schlauch in seiner Ursprungsform und verarbeiten ihn nur soweit wie notwendig, wodurch unsere Produkte größtmögliche Authentizität zu dem Ursprungsprodukt behalten. Wir beziehen alle Komponenten vorrangig von ortsansässigen Anbietern, das bedeutet kurze Wege und weniger Belastung für die Umwelt. Die Ausgangsmaterialien sind Ausschussware oder nicht mehr gebrauchsfähige Produkte. Das puristische und zweckorientierte Design unserer Produkte sowie das besondere Material, aus dem sie hergestellt sind, machen sie zu außergewöhnlichen widerstandsfähigen Accessoires.



MOVA Globes

MOVA International, USA

The MOVA Globe was created from a simple idea to recreate the beauty and calm nature of the Earth. When exposed to ambient light and the Earth's magnetic field, the revolutionary globe seems to defy the laws of physics, rotating silently on its own without any batteries, electricity or visible forces. With its organic movement and striking designs, it is intended as a conversation piece for home decor enthusiasts, early technology adopters, alternative energy seekers as well as those who simply want something they've never seen before.



muskat

Brühl & Sippold GmbH, Germany

The muskat range of armchairs and 2 seater sofas is defined by reduced design, a transparent structure and the use of natural materials. Their characteristic lightness is coupled with a cosy, uncomplicated look and extreme versatility. The minimalist basic lines are gently broken by removable armrest pads that add a casual, soft note to the pieces of furniture. This allows different accents to be added to the same piece to create different moods as required: without the upholstered cushions, muskat looks particularly clean-cut, delicate and linear; adding the cushions increases the soft, cosy impression of the sofa or armchair fabric. The seat and backrest cushions are visually separated by dividing lines, which adds an additional casual touch to the overall impression. The seat and backrest angles make this furniture extremely comfortable. The covers are removable. Design: Kati Meyer-Brühl



NATUREHOME „3legs“ Hocker
NATUREHOME GmbH, Germany

Der „3legs“ Hocker von NATUREHOME ist ein Geniestreich des Designerduos Läufer+Keichel. Dieses neu entwickelte, exklusive NATUREHOME-Design ist eine Kombination von bisher nicht vereinbaren Gegensätzen. Die ergonomisch weichen Rundungen des „3legs“-Hockers wirken leicht, sanft und verspielt, die geraden Linien hingegen strahlen eine kräftige sowie standfeste Stabilität und Geradlinigkeit aus. Diese Harmonisierung von Kontrasten wird durch die hochwertig feinen Züge der gefrästen Nuten und die Verwendung von ausschließlich massivem Vollholz aus Buchen- oder Nussholz untermauert. Der „3legs“ kann unter anderem mit seinen Maßen 47,5 cm Höhe, 42 cm Breite und Länge der Füße sowie 34 cm Breite und Länge der Sitzfläche als bequeme und gesunde Sitzmöglichkeit dienen.



NATUREHOME 3er Set Holz-Tablett
NATUREHOME GmbH, Germany

Design Holztablett in 3 Größen. Die verdrehte Geometrie von diesem Holztablett ist der Blickfang in jedem Interieur. Das exklusive Design der Berlinerin Myra Klose für NATUREHOME ist ausgefallen, einzigartig und funktional zugleich. Das edle, FSC zertifizierte Massivholz vom Nussbaum mit seiner charakteristischen Maserung macht jedes Stück zum Unikat. „Made in Germany“ wird jedes Tablett von Hand gefertigt und anschließend mit unserem ökologischem, farblosem Möbel-ÖL veredelt. So entsteht ein langlebiges und stabiles Designerstück für alle Lebensbereiche. Erhältlich in 3 verschiedenen Größen (LxBxH): ca. 36 x 36 x 3 cm, 43,5 x 43,5 x 3,5 cm und 52 x 52 x 4 cm.



NECKLINE BAG ECOYA

Lässig GmbH, Germany

This diaper bag unites style, functionality and sustainability. The fabric is dyed especially resource-friendly, as water consumption and emissions are reduced and less chemicals are used than in regular dyeing procedures. All in all, 63 percent of the energy is saved. Moreover, the bag is functional like a diaper bag but stylish like a handbag. So the bag is not only fashionably and functionally well-equipped but also the ideal choice for ecologically minded moms.



Nido Lamp

opqrs design studio, Mexico

Nido lamp are made with coffee wooden sticks. We recycling the coffee wooden sticks and giving to a NGO or a community of people who need work for manufacture the lamps. Its a sustainable product because we recycle the waste material and providing work for NGO or a community of people who need work.



NINE TO FIVE - sustainable business fashion

NINE TO FIVE, Germany

Sustainable Elegance for Women on the Move. NINE TO FIVE is modern, forward-looking and progressive. Our creations are elegant, ergonomic, smart, sustainable and make strong yet feminine statements. We are specialises in leather goods for ladies: Footwear and bags that are perfect for both business occasions and private functions. Supporting you throughout the day, they exude elegance in the evenings and are comfortable to wear. Whilst keeping our fingers on the pulse of fashion we stay a step ahead of the quick pace of seasonal trends. We take a very individual approach to the aesthetics of our products, resulting in timeless designs that rise above the whims of fads and fashion.



Nomadi Concept

Peter Opsvik AS, Norway

A range of knock-down furniture objects designed for the emerging urban Nomads. The Nomadi range is very flexible, consisting of chairs, tables, benches and stools. It is a knock-down construction that uses a minimum of space and material. It is available in a standard and a sculptural version. The products are easy to assemble, without the use of tools. They are also easy to disassemble. The assembling and disassembling may be done again and again and again without becoming wobbly or unstable. Few parts allows for easy storage in between usages, either leaning against or hanging on the wall as sculptures. It may also be hung on a rack. Nomadi is delivered in flat packs and uses a minimum of space and material. Watch video at: www.opsvik.no/works/industrial-design/nomadi.



NOVEAUX - A magazine for vegan fashion & green lifestyle

Nouveaux Magazine, Germany

Nouveaux ist das erste Print-Magazin für vegane Mode und grünen Lifestyle. Das Heft zeigt grüne Alternativen zu herkömmlichem Konsum in einem schönes Design, damit möglichst viele Menschen angesprochen werden. Natürlich ist Nouveaux nachhaltig, vegan und klimaneutral auf FSC-zertifiziertem Papier mit dem Österreichischen Umweltzeichen produziert. Der Kleber enthält keine tierischen Inhaltsstoffe, die verwendet Farben sind Pflanzenölfarben.



organic office

viasit Bürositzmöbel GmbH, Germany

organic office ist ein modulares Möbelset zum Sitzen, Hocken und Ablegen. Die Module sind Werkzeuge der Kommunikation, funktionale Unterstützung von Teamarbeit, Besprechung, Pause und Kreativbereich von Gemeinschaftsflächen im open space office. organic office ist ein sinnvolles Werkzeug in der Organisation der Arbeitsabläufe. organic office hat eine eigene Konfigurations-App. Die App organic office ist als Vorschau auf das Produkt konzipiert, schon vor dem Kauf lassen sich Funktionsmerkmale, Anordnungen und räumliche Ausdehnung spielerisch erproben. In der Organisation der Arbeitswelt wird die App zum Planungswerkzeug um bei der Vorplanung von Gruppen- und Arbeitsprozessen die Möbel als Unterstützung zu setzen. Das Möbelset mit Unterstützung der App zeigt seine Innovation in der situativen Anpassungsfähigkeit für New Work bis Powernap!



paper box - exhibition & display system

spek Design, Germany

Exhibition & display system. The system addresses users in the area of trade fair construction, shop fitting and event design. It is the first exhibition system made of corrugated cardboard with a flame retardant M1 and B1-DIN 4102 certification. It consists of the following elements:

- Three basic paper box modules: Window box, full box and side box.
- the modules are connected together with cardboard tubes, which enables a flexible angle adjustment right up to the circular formations.
- The orthogonal-connectors enables the building of closed walls and counters.



Green Product Award Selection 2015



Pinus Pinaster

Studio Fabien Barrero+Carsenat, France

Studio Fabien barrero+carsenat has open on January 2013, choosing a small town : Castels in south-west France. In the middle of country side the Périgord Noir is an area surrounded by forest and historical sites . We work using the identity and roughness from materials such as wood, marble and ceramic. We look for connexions and relations between traditional and contemporary processes, seeking natural imperfections / character from sources to turn them into a philosophical poetry-story.



Play with plywood

Peter Opsvik AS, Norway

Chairs have been made of wood for decades. It is perhaps necessary to underscore that wood is a renewable material. The positive environmental aspects of using wood is explained below. The chair parts cut out of flat plywood board may have a trim appearance, but they are normally quite uncomfortable for the sitter. By using the torsion principle, the plates yield in the right places, resulting in forward and backward tilt, as well as supporting curvature in the lumbar region. The chair requires little space when it is folded up. As a rule, the technique behind traditional forward and backward tilting chairs is found in mechanical devices and mechanisms. With this new concept, laminated wood alone does the whole job. The torsion concept expands the possibilities inherent in laminated wood's natural flexibility. It is well known, that laminated wood constructions are supple and lend a certain amount of flexibility to chairs. This concept, however, brings with it completely.



Plumen 002

Plumen, UK

The Plumen 002 is an accent light bulb, designed for spaces that need a warm, atmospheric light. Low energy light bulbs are usually created to be as bright as possible, making them unsuitable for intimate spaces. The Plumen 002 is the first low energy alternative to the decorative filament bulb and it works in any ambient setting. Inspired by the work of Barbara Hepworth, the 002 is sculpted to create different intensities of light and to produce a textured glow that is only usually seen with filament bulbs. The result is a bulb that celebrates the technology of energy efficient lighting and the exciting future that it promises. The Plumen 002 provides the customer with the opportunity to make an environmentally conscious choice without having to compromise on style.



Plywood Workspace

PLY PROJECT, Germany

How to envision a space beyond the cubicle that could inspire ideas and increase productivity? We all experience that our best thinking pops up unexpectedly when we are situated with relaxation and physical well-being in our daily life. Transforming the inspired workplace, we can be more relaxed and secured for optimum productivity. Our design approach is to re-evaluate engineered wood products such as plywood and improve and diversify their material performance for designers and architects. By re-discovering and re-inventing the traditional material of plywood with the latest production technologies, we can transform and adapt it into new applications for our built environment.



recreate textiles

krupka-stieghan Studio für Produktdesign, Germany

Usually industrial cotton waste is not reused adequately but burned. In the recreate textiles project we used these waste materials in our own prototypical experiments and test series to create a recycling material collection in the field of non wovens and natural fiber composites as well as potential applications for interior design. Partners were möve, a traditional german manufacturer of exclusive terry cloth products, STFI, a well known textile research institute and BASF design factory.



re-design

Daria Wartalska, Germany

The thinking behind the objects in this booklet was to produce objects in both a simple and practical way using materials that already exist. Industry glass, such as bottles and jars seem an ideal material to redesign and create objects for daily use. This is down to their thermal values and the cost. The use of non returnable bottles often requires few changes and little interference to the original material and recreates some new and interesting designs. Hence all presented objects, made completely from reused materials are functional, sustainable and most attractive.



RESYSTA - Ein Naturfasercompound, das seiner Zeit voraus ist

Resysta International GmbH, Germany

In über 15 Jahren Forschung und Entwicklung hat sich die Resysta International GmbH zum Ziel gesetzt, einen nachhaltigen und weltweit einheitlichen Materialstandard zu etablieren. Das Ergebnis: Ein Naturfaser-Polymer-Composit, welches ein natürliches Abfallprodukt (Reishülsen) nutzt, um eine Alternative zum Werkstoff Holz zu schaffen. Extrudierbar, langlebig, pflegeleicht und zu 100% recyclebar. Resysta: Ein Material, unzählige Möglichkeiten. Die Zukunft ist aus Resysta.



Retap Water Bottle

Retap ApS, Denmark



Retap stands for refilling with tap water. Retap was initially influenced by reading about plastic islands in the oceans, consisting mainly of plastic bottles. We felt that something had to be done. So we set our minds on designing a bottle that is especially designed for drinking tap water.



ROKSTYLE - Erste Designmarke für Grabsteine fertigt mit der Produktlinie „Natura“ nachhaltige Grabsteine

Stein Hanel GmbH, Germany



Der Tod gehört wie die Geburt zum Leben. Und doch ist es schwer, Abschied zu nehmen. Ein einmaliges Kunstwerk, aus Liebe, Ideen und Worten zusammengesetzt, bewahrt das Andenken und die Erinnerung an einen verlorenen Menschen. Das Interesse an regionalen Produkten ist in den letzten Jahren immer stärker gewachsen. Wir wollen diese Entwicklung gerne und nachhaltig mit unseren neuen „Rokstyle-Natura“ Modellen unterstützen. Seit Jahren forcieren wir heimische Natursteine und garantieren höchste Qualität bei der Produktion. Gleichzeitig wirken wir der Diskussion um „Indische Kinderarbeit an Grabsteinen“ entgegen, indem wir ein hochwertiges Produkt in Deutschland fertigen, dessen Wertschöpfungskette auf regionalen Produkten aufgebaut ist. In Deutschland gibt es ca. 5500 Steinmetze. Wir sind bei der Verbraucherinitiative Aeternitas (über 50.000 Mitglieder) auf www.gute-grabmale.de als einer von 29 Betrieben für besonders nachhaltige Grabsteine bereits engagiert.



ROOM IN A BOX

Palm & Dissen GbR - ROOM IN A BOX, Germany

A bed that arrives in a box, pulls out like an accordion to assemble and if you move, just push together and post to your new address! Made from cardboard, it is 100% recyclable, too.



THE KEY NOVEL

Lockengelöt, Germany

Key chain holder made of books. Unique piece, handmade in Hamburg. The solution for books, no one wanted to open up anymore. We close them with 4 hooks for keys, towells, belts and anything else. We get the books from Hamburg book shops, house clearances, customer's attic books. Also custom made books have been made for medic waiting rooms, publishers and authors. Lockengelöet is the name of a redesign studio in Hamburg, Germany. Handmade recycling and redesign of every day objects is their mission. Since 2004 big oil barrels become cupboard systems, vinyl records are turned into wall lamps or books have a second life as coat racks. It's all made in Hamburg and every product comes with its own history and gets a completely new function. Founded in 2004 by Dennis and Carsten in the heart of St. Pauli, we opened a new one in 2012 at Marktstrasse, a nice street featuring Hamburg design and local fashion labels. Now all of the production is based in our new studio 30 min out of town. By now we ship our products to around 100 shops in and outside of Germany. 80 % of our portfolio is recycled, we produce every thing in Hamburg, energy from Greenpeace, Lichtblick, redesigning local resources.



Sofa Livia

Grüne Erde GmbH, Austria

The Livia sofa is characterised by its organical, flowing contours, which are inspired by nature. What makes Livia so special is that it is also made exclusively from natural materials! The solid frame is composed of high-quality European beech and then meticulously hand-upholstered using breathable, elastic materials, such as pure new wool, coco latex and natural latex. This filling is then carefully covered with fabric, which is sewn in place, stitch-by-stitch. The Livia sofa represents ‚organic design‘ in its purest form.



Spray the cup

Soroush Vahidian - Tehran university, Iran

„Spray the cup“ is a water dispenser which stops waste of huge number of disposable plastic cups by creating a thin layer on surface of used cup to prevent transmission of possible septic of past user and make the cup reusable. It uses a kind of waterproof and non-toxin Nano -coating which is sprayed on the cups situated inside the dispenser via a spray. This spray coats both inside and outside of the cups, and a nano layer with thickness of 10 microns (5 microns inside and 5 microns outside) will be formed on cups each time before use. As a result user does not need to pick a new cup and then throw it away, just push the spray button to spray the used cup with nano-coating and then take a new nano layered cup. By this method a cup can be used again and again. After drinking water he/ she have to put the cup back inside the dispenser for a new layering process which will be done by next user and this cycle will go on up to about 200 times and after that cups can be replaced thoroughly.



Staga

Muototalo Bravoo, Finland

Staga products are produced from used and thrown away ice hockey sticks. Products are made by upcycling already existing material into new high quality products and avoiding waste.



Swirl ProNature vacuum cleaner bag Next Generation

Melitta Europa GmbH & Co. KG, Germany

Swirl ProNature vacuum cleaner bag Next Generation. Just in Germany 80 -100 Mio. vacuum cleaner bags are thrown into waste p.a.

Usually the bags are produced out of Polypropylene non-woven material and plastics – based on 100% fossil raw material.

The new generation of non-woven fabric vacuum cleaner bags - made of a minimum of 40% recycling PP and renewable resources - help to care for our fossil resources. In parallel we have found a way to offer a high performance in fine dust filtration for a fine dust free environment while hovering.



Terroir Chair

Jonas Edvard Studio, Denmark

The Terroir Chair is made from Seaweed and paper. It is 100% organic materials and gets its strength from the Brown algae from the coast of Denmark. The seaweed is collected by hand groudged and cooked into a glue. It is then mized with paper to become a strong and lightweight bio composite.





Green Product Award Selection 2015



THANK YOU Flaschen - Glas statt Plastik

Nature's Design Products GmbH, Switzerland

Einweg-Kunststoffflaschen sind eine bedeutende Quelle der Umweltbelastung und eine Gefahr für die Tiere. Die Zersetzung von Kunststoff kann Hunderte von Jahren dauern und ist für Lebewesen auch in Form von Mikropartikeln gefährlich. Große Mengen an Kunststoff landen in den Ozeanen, wo er die Unterwasserwelt gefährdet und über die Nahrungskette auch in den menschlichen Körper gelangen kann. Mit unseren THANK YOU Flaschen wollen wir hier eine Alternative bieten. Glas statt Plastik!



The ABURY Design Experience

ABURY Collection GmbH, Germany

The ABURY Design Experience (ADEx) is the first international contest in search for emerging designers to create an accessory capsule collection using traditional crafts knowledge from different cultures. What the ABURY Design Experience is aiming to achieve is simple, yet very substantial. It aims to preserve world crafts, present more talented emerging designers to the fashion industry, and ultimately to have a positive impact within local communities, and the fashion industry throughout. The exchange of knowledge between the old world and the cutting edge allows for a new context to emerge, leasing crafts a new life and lending design an emotional component which has been missing in recent times. The designer is embedded in a craft culture for roughly three months to learn and share ideas from one another and to create a collection together, bringing the best of heritage knowledge and wisdom to high design and sustainable solutions.



The Swarm

Marcus Ebert -

The Stuttgart State Academy of Art and Design, Germany

Do we still leave enough (living) room for tangible fantasies? This desk object is the result of the application of digital and parametric design tools. It was created with the help of laser technology and by using sustainable materials. Paper and cardboard are the main components this lamp is composed of. This desk object pools four functions: Shelf space, a facility for inductive loading of small electronic devices, sensational illumination of the ambiance and an exclusive statement of the ecological sensibility of its owner. Because of its natural style, „The Swarm“ metamorphoses each arbitrary position into an atmospheric milieu.



this too shall pass

Tomorrow Machine, Sweden

THIS TOO SHALL PASS Is it reasonable that it takes several years for a milk carton to decompose naturally, when the milk goes sour after a week? This Too Shall Pass is a series of food packages where the packaging has the same short life span as the foods they contain. The package and its content are working in symbiosis. In this project, we asked ourselves how packaging can be made in a near future, with the technology that is available today.



Thurmanite® jewelry

James Thurman - University of North Texas, USA

Thurmanite® is a composite material made of layers of recycled paper bonded together with eco-resin, and then carved, sanded, and polished to reveal patterning similar to woodgrain. It is an extremely labor intensive process because each layer of paper must be individually coated with resin to ensure a solid bond which is required for overall strength and integrity of the material. After lamination and full curing, the billet of material can be worked in a way similar to wood or plastic. Once shaped and polished, Thurmanite® can either be used as a component within larger pieces of jewelry or as its own completed object. Properly cared for, Thurmanite® is as durable and lasting as other wood jewelry pieces. However if desired, the material can also be recycled due to its paper and eco-resin composition.



TIO - sustainable toothbrush

TIO UG, Germany

Rethinking an everyday product and optimising its sustainability - this was the basic idea behind the development of the innovative manual brush TIO. The result shows a consequent design and communicates the sustainable approach in an aesthetic manner, without neglecting the important aspect of dental care. The implementation of bioplastics made from renewable resources combined with an intelligent product- and packaging design, reduces CO2 emissions and moreover saves valuable resources..



Transformierte Alltagsgegenstände

kitschcanmakeyourich, Germany

Die Designerin Lilli Grewe entwickelt mit ihrem Label „kitschcanmakeyourich“ seit Anfang 2014 Wohnaccessoires. In der ersten Produktlinie werden dabei Alltagsgegenstände über Material und Funktion augenzwinkernd in einen neuen Kontext gesetzt. Trotz Verspieltheit der neu gewonnenen Produkte steht die Ästhetik im Vordergrund und alltägliche, formschöne Gegenstände bekommen die Aufmerksamkeit die sie verdienen. Alle neu transformierten Objekte werden regional in traditioneller Handarbeit gefertigt und bilden einen charmanten Gegenpol zu den einstigen Großserienprodukten.



Troldtekt® wave

Troldtekt A/S, Denmark

The new Troldtekt® wave panel is a sculptural, three dimensional, sound absorbing ceiling or wall surface – an acoustic wall and ceiling cladding. The Troldtekt® wave panel is part of the Troldtekt acoustic panels series – cement bonded wood wool - and thus have the same ecological aspects. The Troldtekt® wave panels are FSC® or PEFC™ certified, allergy-friendly and contain no allergens or harmful substances. The Troldtekt acoustic panels are certified by the Danish Indoor Climate Labelling (best categories), M1 (low emissions) and Allergy UK (Allergy Friendly Product Award). The Troldtekt acoustic panels are Cradle to Cradle Silver certified and can be returned to nature as compost (biological cycle).



**Unleashing the potential of an old natural material:
VULCANIZED FIBRE**

MO Cases UG & CO KG, Germany

We are MO, a team of designers on a mission to create products that last a lifetime. We want to become manufactures of high quality suitcases in Berlin. In our material R&D for a long lasting suitcase shell we rediscovered a 150-year-old, natural material: Vulcanized Fibre (VF). Composed of only cellulose, sourced from industry leftovers and wood, it's recyclable and compostable. It's lighter than aluminium, tougher than leather, and stiffer than most thermoplastics. However, to produce the minimalist shell that we imagined, we had to invent a new way of working with VF sheets. Nobody has yet realized such sharp forms without joints in VF and no tools or process documentation exists. So we developed a new 3D-forming process and tool. Our deep-drawing method allows us to make the best use of the material's strengths, in applications that are currently exclusive to thermoplastics or metals. It will pave the way for VF's Renaissance as the spine of many new, long lasting products.



VEGRACK - grow your greens

VAKANT design, Germany

Grow your greens. Consumers demand more and more for transparency and information about origin, quality and sustainability in the production chains of their foods. At the same time there is an increasing loss of confidence in the commercial food industries. Many people would like to grow their own vegetables, but most of them don't have the space or the know-how or they are simply lacking the time for gardening. Moreover, the decentralized cultivation of conventional vegetables and the transportation and packing involved are turning the originally natural good into an environmentally harmful product. Thanks to professional horticultural technology and vertical design the VEGRACK allows to grow vegetables, fruits and herbs in your own home. The organic hydroponic nutrients and the highly efficient LED grow light will ensure a successful harvest. Already while seeding a feeling of starting a process of your own begins. And during the growing you can watch, touch and smell what you will harvest soon. Due to shape and design the VEGRACK integrates itself as an green enrichment into your home.



waschbar

Annika Breidenbach -

The University of Design Schwäbisch Gmünd, Germany

Ziel war es eine Waschmaschine und den dazugehörigen Service zu entwickeln, um eine gemeinsame Nutzung in Mehrfamilienhäusern möglichst benutzerfreundlich, ressourcenschonend und rentabel zu gestalten. Durch die gemeinsame Benutzung von Waschmaschinen sinkt der Ressourcenverbrauch im gesamten Lebenszyklus (ausgenommen der Nutzungsphase) einer Waschmaschine um durchschnittlich 80%. Durch Detaillösungen, wie die automatische Waschmitteldosierung oder die Dosieranzeige im Waschmittelfach, schont waschbar die Ressourcen auch in der Nutzungsphase. Basierend auf einer ausführlichen Nutzerbefragung und Beobachtung von deren Waschabläufen, wurde ein Servicekonzept erarbeitet. Eine Webseite ermöglicht das Einsparen von Wegen, informiert den Nutzer über ressourcenschonendes Waschen und der Nutzer kann seine Waschkosten transparent einsehen. Das Konzept waschbar wurde als Teamprojekt im Rahmen der Bachelorarbeit im Fach Produktgestaltung erarbeitet.



Windflock

EMAMI DESIGN, Germany

Windflock is a flexible „add-on“ system made of mini windmills. In low height areas the wind force not sufficiently strong enough to power an usual wind turbine. The small modules require far less windpower and are able to cover the electricity demand of an average household. Advantages:

- Integrable into architecture
- Individually adjustable
- low production, transportation, acquisition and installation costs
- 360° axle rotation for direct response to wind conditions.



Winzerfix – der nachhaltige Allrounder

AGRANA Stärke GmbH, Germany



Das bunte und flexible biologisch abbaubare Kettenband WINZERFIX aus einem Stärke-Blend „Made in Austria“ lässt sich sowohl im Outdoor- als auch im Indoor-Bereich vielseitig einsetzen – zum Befestigen von Pflanzen und Pflanzenteilen im Garten- und Weinbau oder für Zimmerpflanzen, als Kabelbinder oder Dekorationselement und zum kreativen Basteln. Prädestiniert ist WINZERFIX für alle Weinbauern respektive im Bioweinbau und speziell für Gärtnereien und Hobbygärtner zum Hochbinden und Fixieren. Im Indoor-Bereich, wo das Material keiner Witterung ausgesetzt ist, bleibt es lange flexibel und geschmeidig und kann somit mehrmals wiederverwendet werden. Nach Ende seiner vorgesehenen Lebensdauer wird das abbaubare Kettenband kompostiert oder in den Erdboden eingearbeitet, wo es verrotten kann. Nützlich. Einfach. Bequem. Nachhaltig. Das ist WINZERFIX!



wooden ebike

aceteam GmbH, Germany



The “Wooden E-Bike” is an ambitious project by to create an electrical bicycle and build it in an environmental friendly way. In cooperation with the Faculty of Wood Science and Technology of the Eberswalde University for Sustainable Development (HNEE) the idea became reality. The first wooden E-Bike was developed and is now ready for production. Wood is not only a natural material but it also binds CO₂ while metal production requires an eight times higher energy input leading to increased CO₂ emissions. Thus, the Wooden E-Bike has a significantly lower carbon-footprint in comparison to standard bicycles. The wooden fork and the characteristic frame remind you of the form of an eye giving the Wooden E-Bike an unmistakable and distinctive appearance. With the beginning of 2014, the first Wooden E-Bike prototype was completed and gained recognition from the audience. Among others, it was nominated for the renowned iF product design award and priced for its innovation with this year’s Green Buddy Award. In July 2015 the Wooden E-Bike will be introduced to the market by aceteam Berlin.



Green Product Award Selection 2015



zweiTnuTz

zweiTnuTz wardadesign, Germany

zweiTnuTz - social and ecological, unique home textile collection
initial position: pre consumer waste - fabric samples which are no longer needed are collected and pieced together, labels are old weaver punch cards material: linen from Belgian-, cotton/ blended fabrics made by EU-weavers manufacturers: people with mental disabilities create themselves the works of art product design: claudia warda product: tablecloths, cushions, plaids, bags collection statement: perfect, non-perfect unique items.

DesigN Award 2010 Wien,

A German Design Award, Nominee 2013